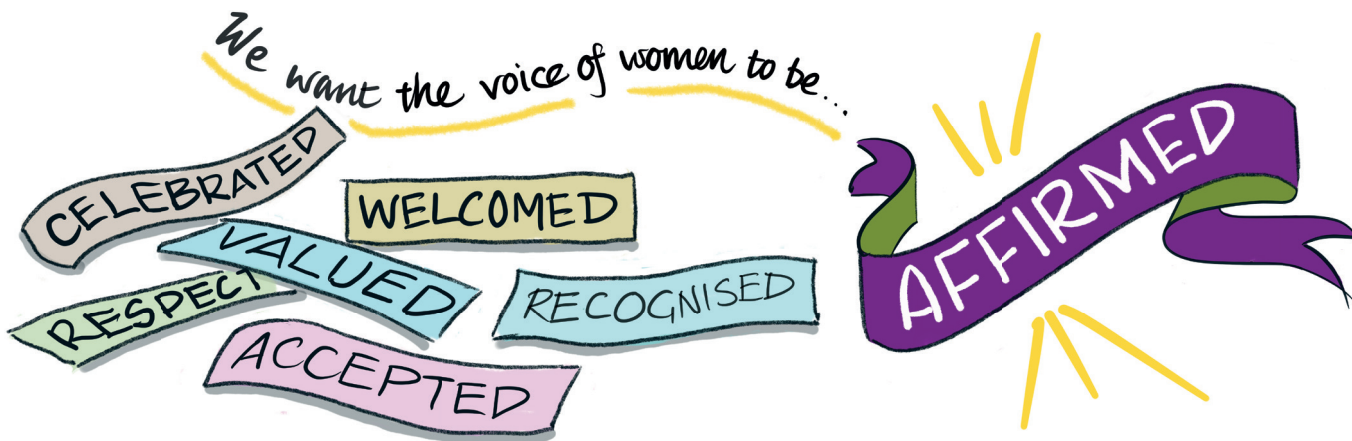




What does affirming women leaders in our association look like?



TOGETHERNESS

LEVEL PLAYING FIELD

NO LIMITS ~ FREEDOM

MY EXPERIENCE COUNTS

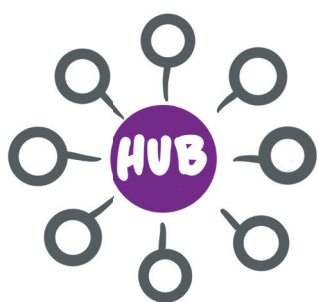


SUPPORTED

SAFE ENVIRONMENT

SKILLS VALUED

VOICES VOICES VOICES VOICES

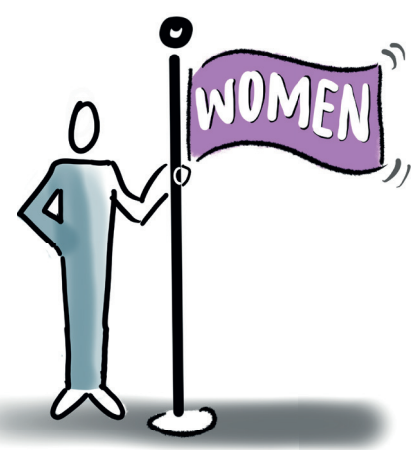


Who sets the CULTURE?

A Lack of SELF AWARENESS in some who are DOMINANT

Who are the INFLUENCERS?

SAFE to be VULNERABLE



SUGGESTIONS

- Training in GROUP FACILITATION
- Modelling LEARNING (as opposed to knowing)
- Monitoring representation & attendance in SCBA spaces
- CULTURE of CLUSTERS explored