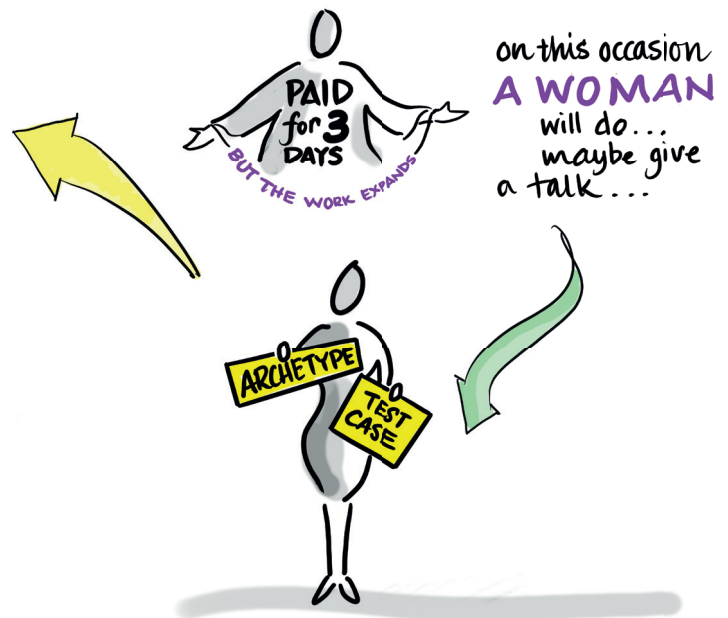
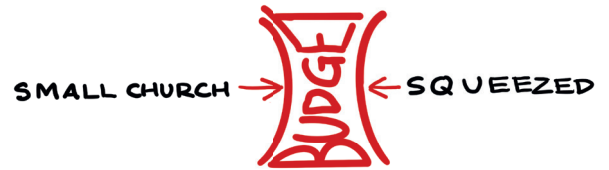
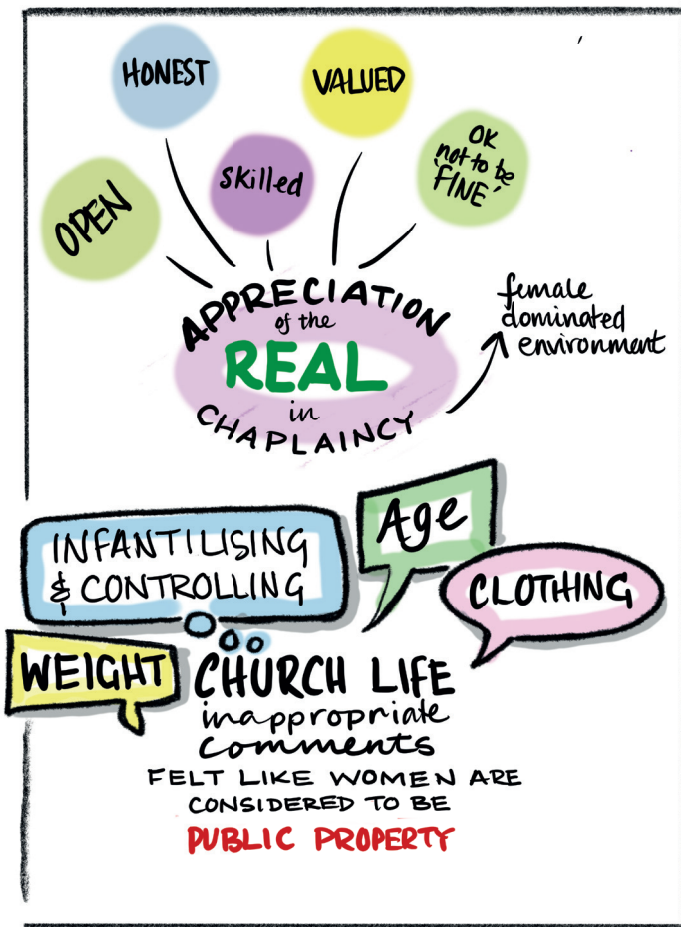




# Is it easier for a female Baptist minister to flourish as a chaplain in the NHS than in local Baptist churches and trans-local Baptist life?

BAPTIST MINISTERS ▷ 23% female  
 FREE CHURCHES GROUP HEALTHCARE CHAPLAINS ▷ 44% female

## ACCESS to FUNDING women are shortchanged



## LESSONS for our BAPTIST FAMILY

- Funding for *women who are not funded. initial training & CMD sabbaticals*
- Training *exploring the barriers for women*
- Recognition of the place of Chaplaincy
- Updated theology of Chaplaincy

Women find places of ENCOURAGEMENT and flourishing

WE ARE CALLED BY GOD like it or lump it WE ARE HERE TO STAY